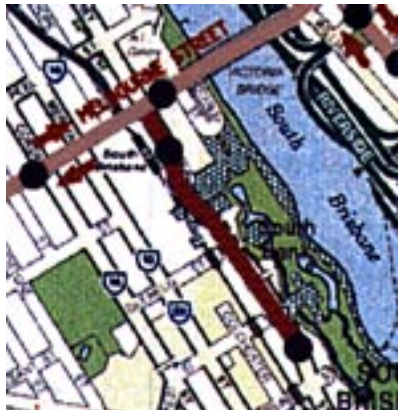


Brisbane Light Rail Urban Design, Brisbane, Australia

with EDAW, 1999

Client: PPK Infrastructure

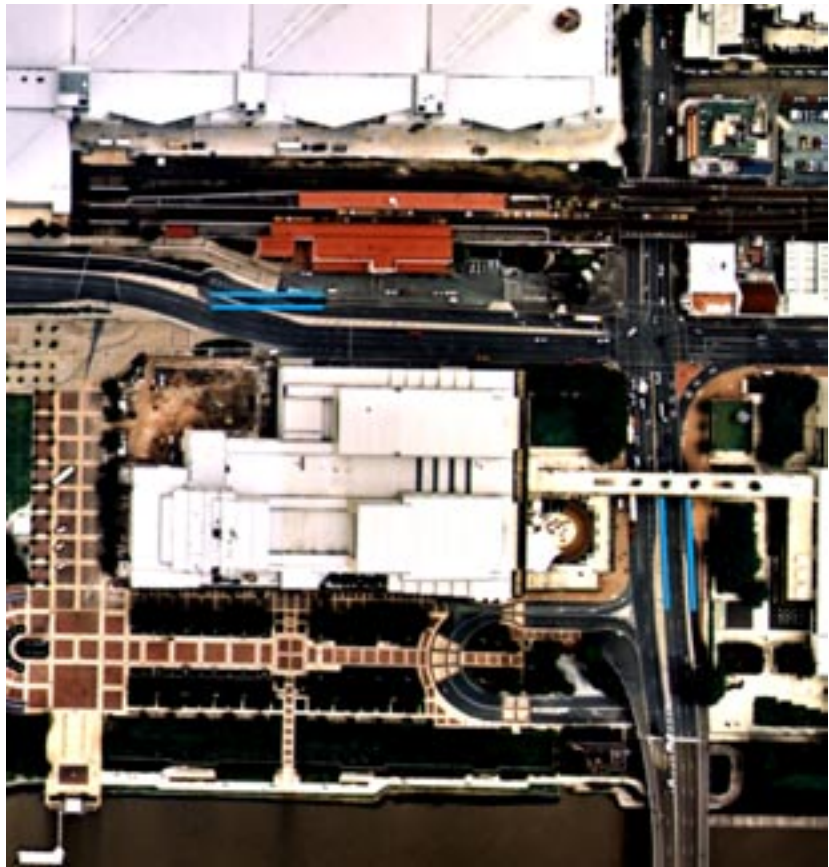
The Brisbane Light Rail will provide public transport connecting the inner suburban areas to the CBD and will provide stops that integrate existing transportation networks. My responsibility was to coordinate with a team of infrastructural engineers and provide a visual and urban design assessment for an extension spur to service the South Bank area. The visual assessment studied the visual impacts of the Light Rail infrastructure and service to the South Bank area along Grey Street. A rigorous methodology was established, based on existing conditions, views, impacts and recommended mitigation, which provided the basis for an objective report. The urban design assessment analyzed the route and stop locations in terms of safety, character, connections to existing transport including trains, buses and ferries and economic development opportunities.



Geographic area of study



View of typical condition



Composite illustrating proximity of proposed stops